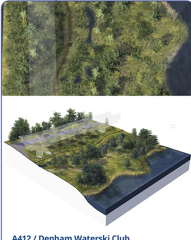


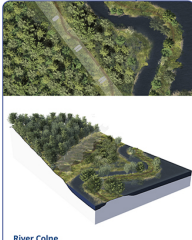


Landscape Design Strategy

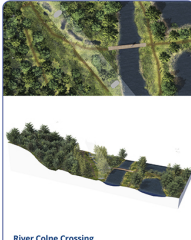
- **Conserve:** Retain the ancient woodland at Battlesford Wood
- **Enhance:** Establish a greater range of wetland habitats
- **Restore:** Establish landscape types such as wet woodland and chalk grassland
- **Transform:** Deliver new recreational routes for walking and cycling



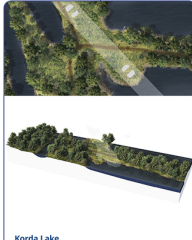
- A412 / Denham Waterski Club**
Key design features
- Retain woodland
 - New shallow waterbodies
 - Plant woodland and scrub
 - Install a new footpath



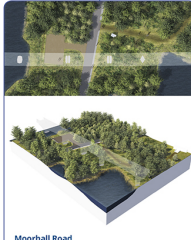
- River Colne**
Key design features
- Additional wet woodland
 - Retain riverside habitat
 - North-south footpath
 - Public art installations



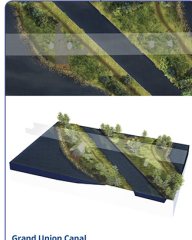
- River Colne Crossing**
Key design features
- New footbridge across the River Colne
 - River channel improvements
 - Woodland and scrub planting
 - Protect wildflower habitat from visitor disturbance



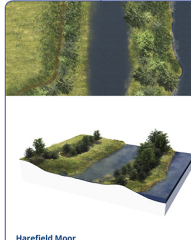
- Korda Lake**
Key design features
- Create new shallow wetland shelves at the edge of Korda Lake
 - Provide viewing opportunities
 - Minimise vegetation clearance



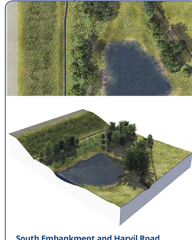
- Moorhall Road**
Key design features
- Reinstated mixed broadleaf woodland
 - Reinstated areas of dense scrub and ground cover



- Grand Union Canal**
Key design features
- Open areas around the piers to create views across Savy Lake
 - Create the landing for the pier
 - Retain mature tree cover along the canal corridor
 - Retain alignment of the Colne Valley Trail and footpath



- Harefield Moor**
Key design features
- Provide additional flood storage capacity
 - Plant new woodland
 - Minor re-alignment of the public footpath
 - Retention of most mature trees along the south shore of Harefield no.2 Lake

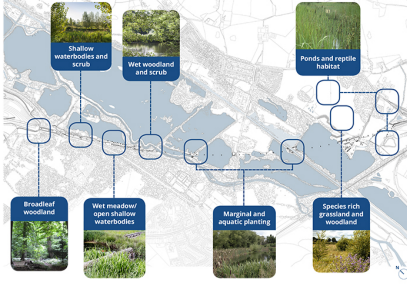


- South Embankment and Harvil Road**
Key design features
- Divert public right of way
 - Woodland and scrub planting
 - Pond and grassland creation



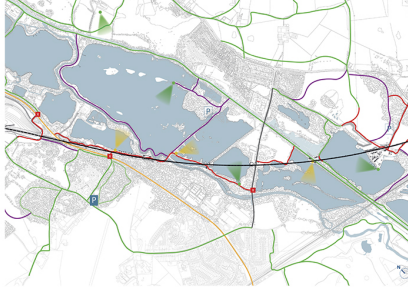
Habitat Creation

- Our habitat creation strategy:
- Minimise the clearance of vegetation and habitats
 - Create new and diverse habitats appropriate to the area
 - Balance habitat creation with public access and recreation
- We will focus on:
- Areas beneath and adjacent to the viaduct
 - Lake and river margins
 - Open pasture and fields used for flood storage



Rights of Way Proposals

- Key aspects:
- A new footbridge over the River Colne
 - Use viaduct maintenance tracks to provide recreational routes
 - Aligning our paths with the Colne Valley Regional Park Additional Mitigation Plan



Landscape Design

You said... "Mature and ancient trees must be retained at all costs."

• We changed the design of the construction area shown in the Hybrid Bill, so there is now no loss of trees in Battlesford Wood ancient woodland near Wyatt's Covert.

Recreational Routes

You said... "No concrete paths!"

• The new routes will mostly be surfaced with informal materials such as self-binding gravel.

Landscape Design

You said... "Ensure the area is safe, screened from resident view."

• By retaining as many trees as possible, the viaduct will be enclosed within existing woodland for much of its length. As woodland trees continue to grow, the screening effect will increase.

Recreational Routes

You said... "Canal towpath is an important recreational area to be kept open."

• We have set the viaduct piers back from the towpath to enable the existing use and views to continue.