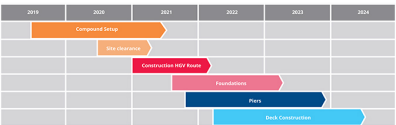


Viaduct Construction Timeline

To minimise our impact on the local community, we will build the viaduct as quickly and safely as possible by overlapping our activities and constructing at different locations at the same time. The building of the viaduct construction compounds will start later this year. As the construction of the compounds progresses, we will begin to clear a construction corridor and build the haul road and jetties across the lakes. Main construction work for the viaduct will start in 2021 and will take around three years to complete.



Viaduct Construction Routes

To reduce our impact we will avoid using the local road network where we can. Our priority is to use the new slip roads from the M25 for our lorries and then onto our proposed haul road. The haul road will be used by thousands of lorries over the course of construction.



Viaduct Construction Sequence

From the main compound between the A412 and M25, we will start building the viaduct in the valley. Some of the key works listed to the right will overlap. Most of our work will run north to south from our main compound, including construction of the entire viaduct deck. However, viaduct piers to the east of the Grand Union Canal will be built from the southern end of the viaduct to maintain the use of the canal and towpaths.

